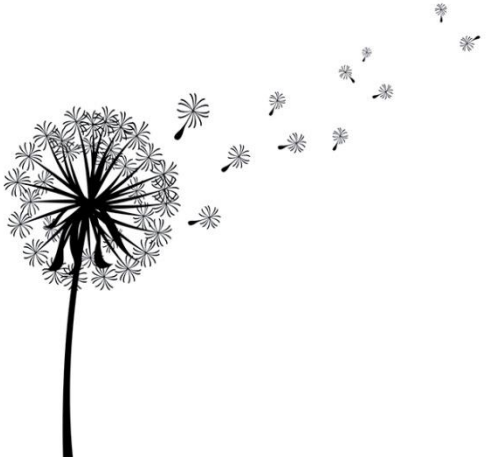


BEE the Change! Dandelions are Vital to Bees



Bees and other pollinators such as butterflies and hummingbirds provide a vital service to the economy of Connecticut and residents' health.

Apples, peaches and pears contributed \$14 million to CT's agricultural industry (Stafford 2009), boosted higher with pumpkins, blueberries, cucumbers, and honey.

But the survival of honey bees is threatened. Parasitic mites, viruses and pathogens, exposure to pesticides, and fewer open flowering meadows for bee forage contribute to colony losses.

You can help –

- ☼ Don't spray herbicides on dandelions! Dandelions provide nectar in spring for bees and beneficial insects, as they transition from a long winter to the abundance of spring blossoms. (startribune.com/top-ten-bee-friendly-tips-2-tolerate-dandelions-and-other-useful-weeds/257190851/)
- ☼ Buy only organic untreated vegetable flower seed and birdseed, labeled organic. Non-organic seed is usually treated with herbicide during growth, causing a systemic effect on the entire plant. Good sources to buy seed: Foodworks, Natureworks, Hudson Valley Seed Co, Accord, NY 12404
- ☼ Plant pollinator-friendly flowers.
- ☼ Lobby your state representatives to support honey bee inspection and education programs.

Learn More –

- ☼ Attend a presentation on Pollinators at the Old Lyme PGN Library Wednesday July 19, 4-6 PM.
- ☼ This month, visit Old Lyme Library to view additional information in the display, "Bee the Change!" arranged by Old Lyme Conservation Commission.
- ☼ Check The Connecticut Agricultural Experiment Station:

[A Citizen's Guide to Creating Pollinator Habitat in Connecticut](http://www.ct.gov/caes/lib/caes/documents/publications/pollinators/a_citizen%20%99s_guide_to_creating_pollinator_habitat_in_connecticut.pdf)

http://www.ct.gov/caes/lib/caes/documents/publications/pollinators/a_citizen%20%99s_guide_to_creating_pollinator_habitat_in_connecticut.pdf

[Portraits of a Few Bee Species Native to Connecticut](http://www.ct.gov/caes/lib/caes/documents/publications/pollinators/ct_bee_photos_collage.pdf)

http://www.ct.gov/caes/lib/caes/documents/publications/pollinators/ct_bee_photos_collage.pdf

Details provided by Mark H. Creighton, Apiary Inspector, CT Agricultural Experiment Station



Report of the Old Lyme Conservation Commission
Printed in *Old Lyme Events* magazine
Summer 2017